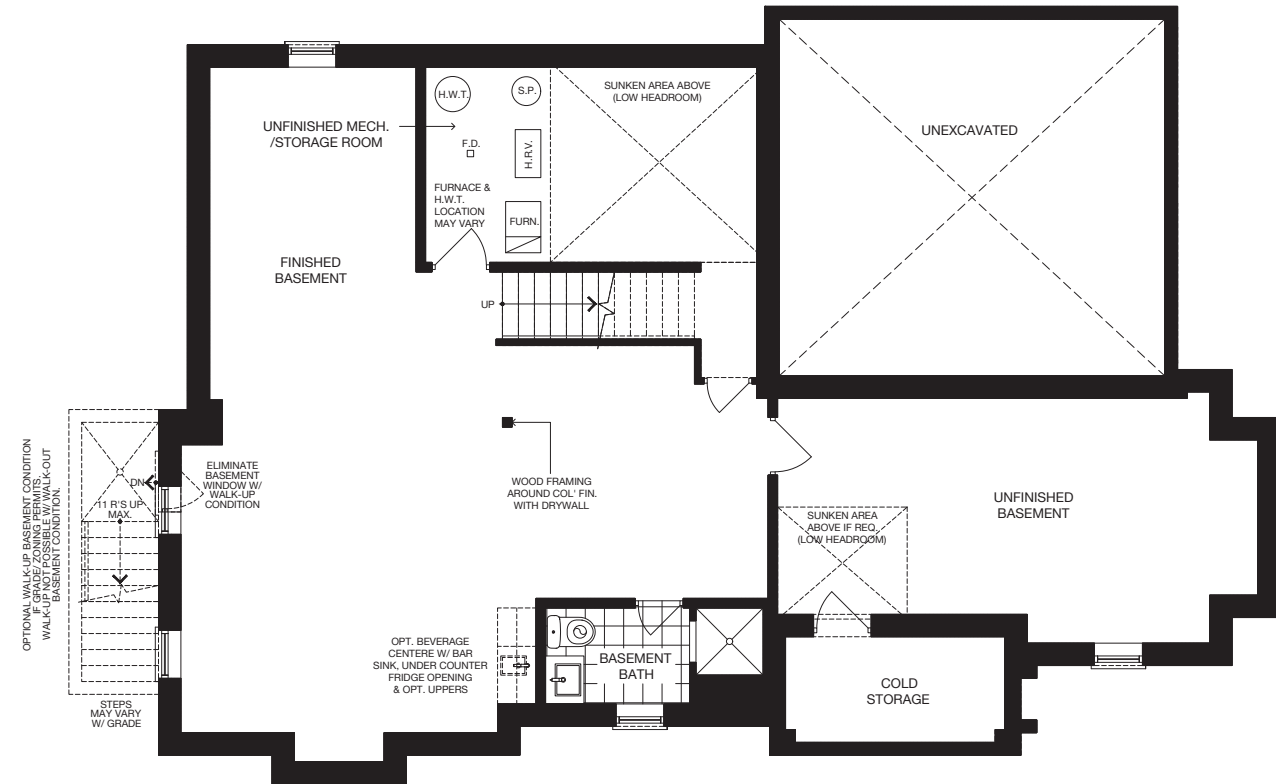


The Balsam

45' SINGLE



GROUND FLOOR (ELEV. A)



OPTIONAL FINISHED BASEMENT (ELEV. A)



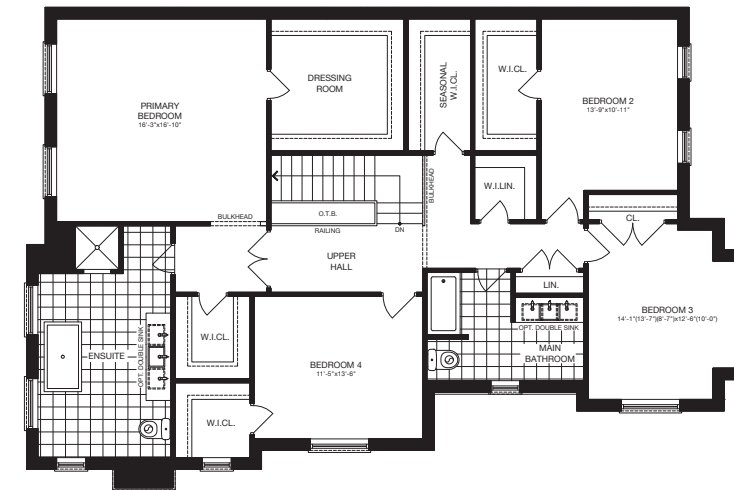
ELEVATION A 3,390 SQ.FT.



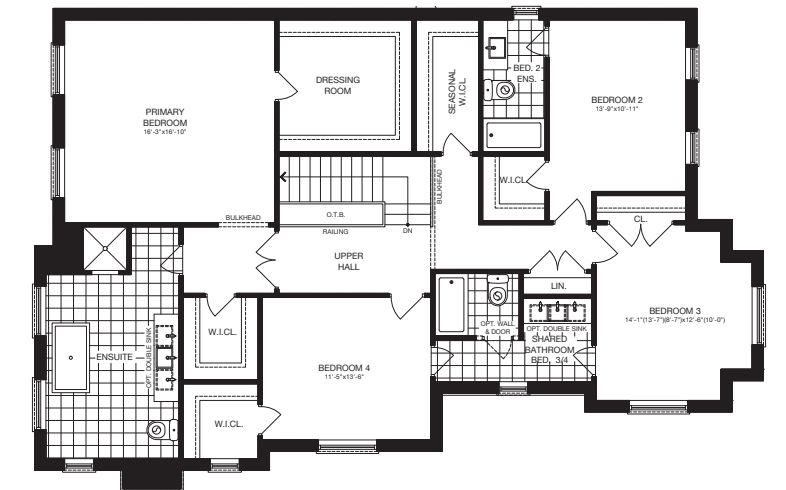
ELEVATION B 3,390 SQ.FT.



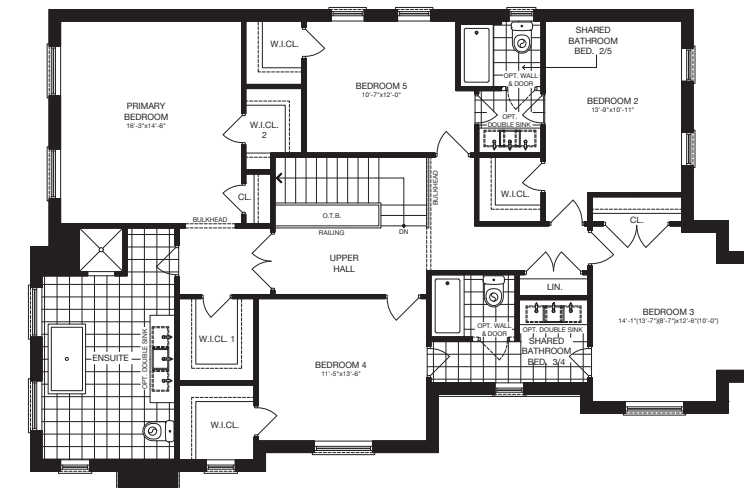
ELEVATION C 3,394 SQ.FT.



SECOND FLOOR (ELEV. A) - 4 BEDROOM



SECOND FLOOR (ELEV. A) - 4 BEDROOM + ENSUITE



SECOND FLOOR (ELEV. A) - 5 BEDROOM