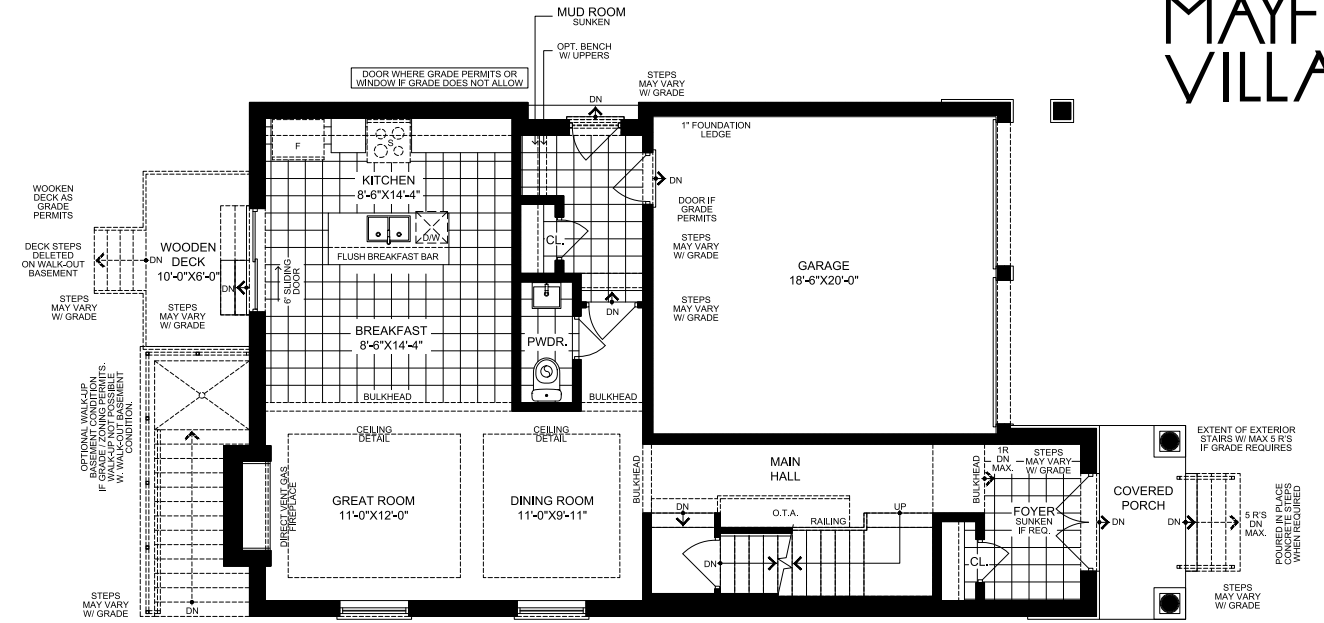


Mali

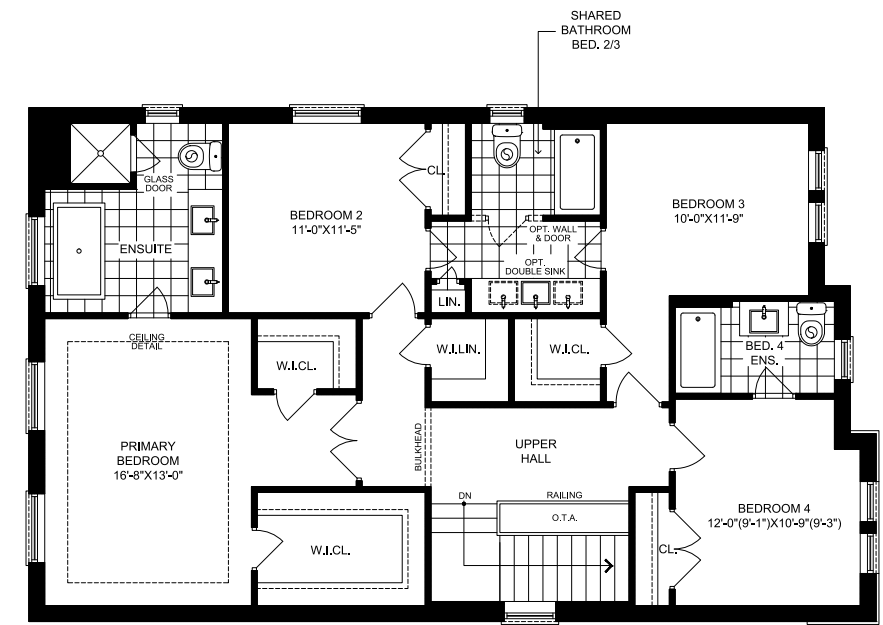
38 ft.

MAYFIELD VILLAGE

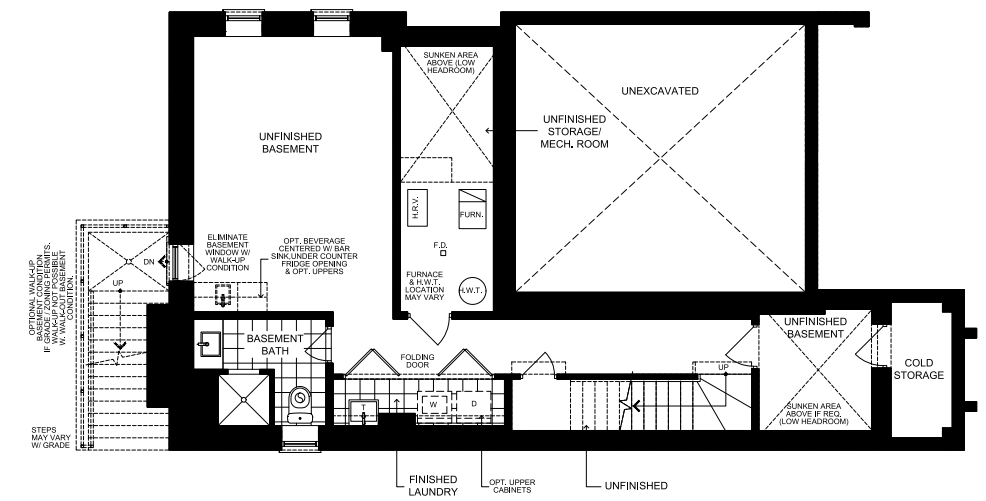
Elevation A | 2,381 SQ.FT.



GROUND A



SECOND A



OPT. FINISHED BASEMENT A



Elevation B | 2,381 SQ.FT.



Elevation C | 2,381 SQ.FT.

Visit [aspenridgehomes.com](https://www.aspenridgehomes.com)

Specifications may change without notice. Please see sales representative for other elevation configurations and basement plans. E.&O.E. All illustrations are artist's impressions. © Aspen Ridge Homes. All Rights Reserved. December 2024.



ASPENRIDGE