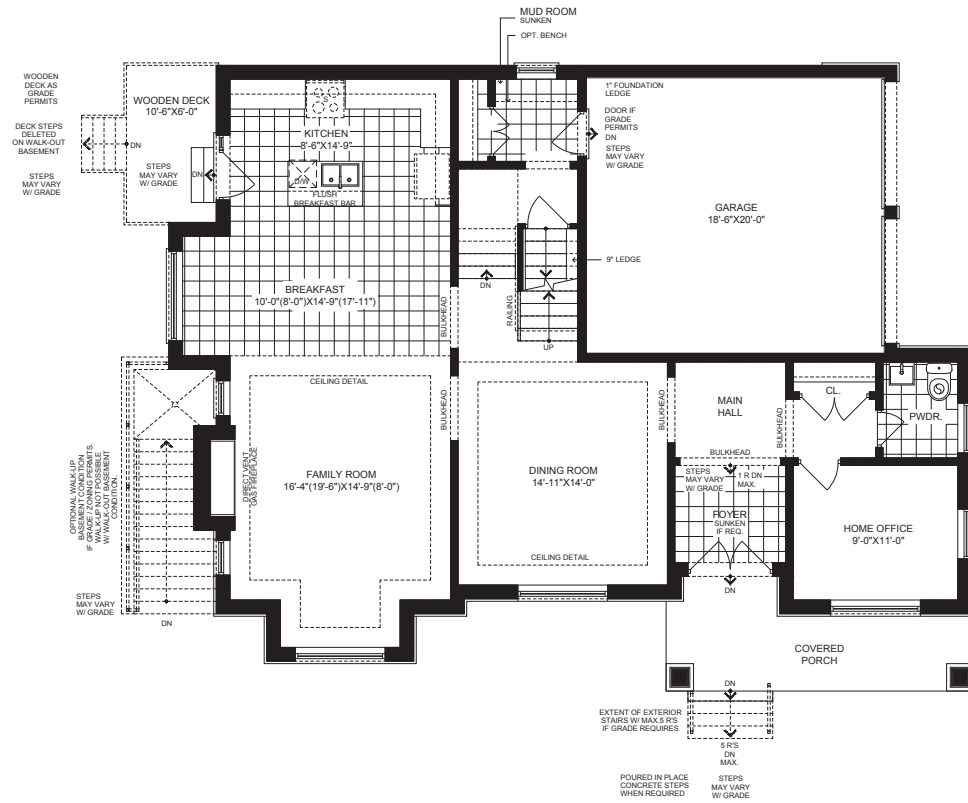


# Hazel

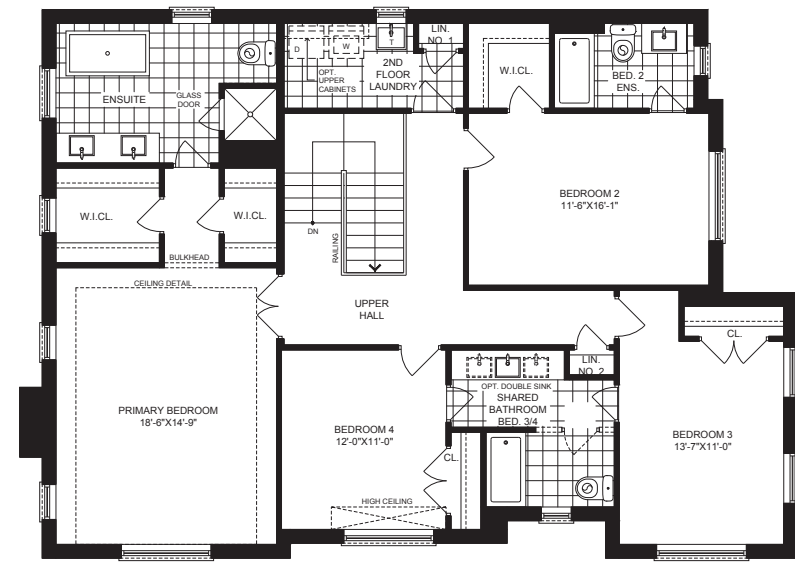
45 ft.

MAYFIELD VILLAGE

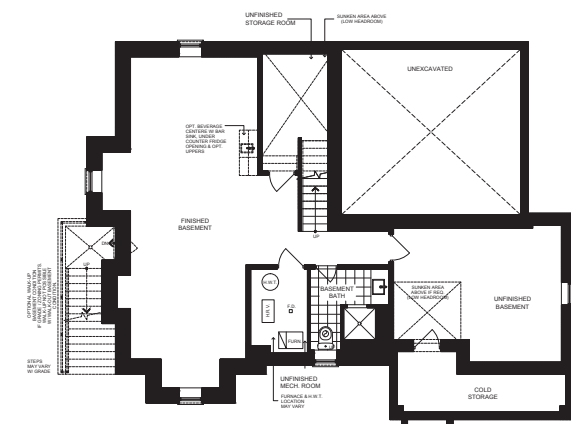
Elevation A | 3,127 SQ.FT.



GROUND A



SECOND A



OPT. FINISHED BASEMENT A



Elevation B | 3,133 sq.ft.



Elevation C | 3,120 sq.ft.

Visit [aspenridgehomes.com](http://aspenridgehomes.com)

Specifications may change without notice. Please see sales representative for other elevation configurations and basement plans. E.&O.E. All illustrations are artist's impressions. © Aspen Ridge Homes. All Rights Reserved. October 2024.



ASPENRIDGE