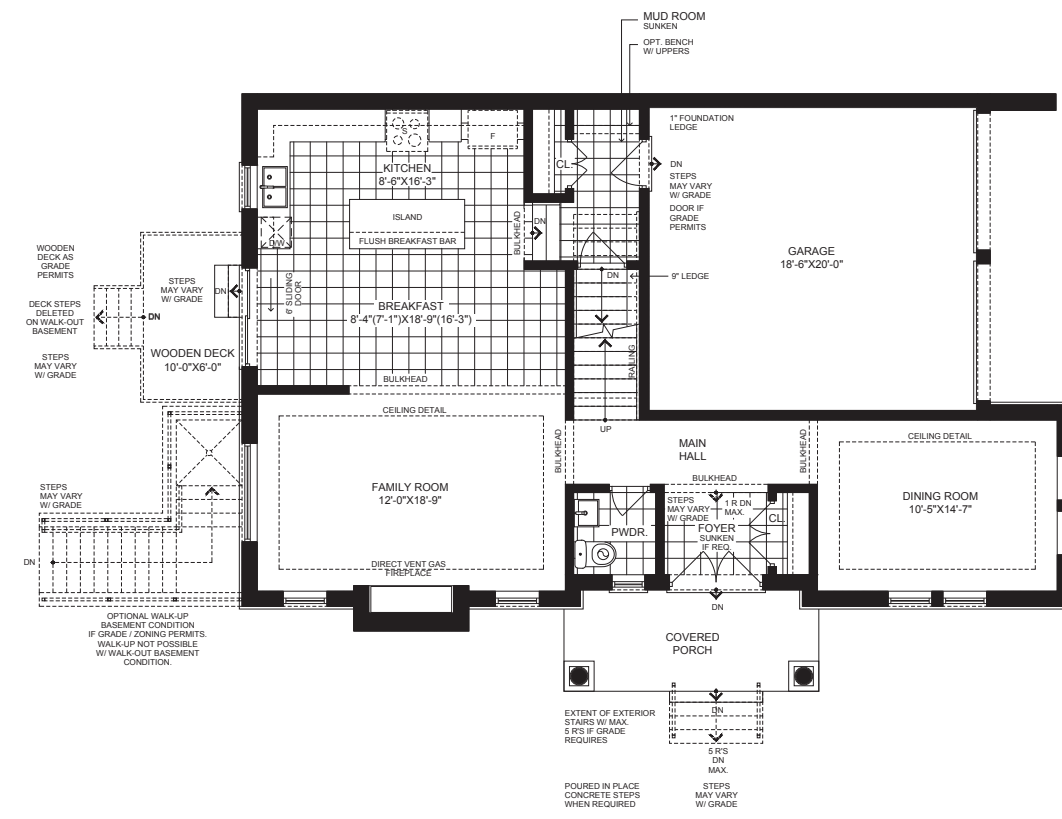


Barsa

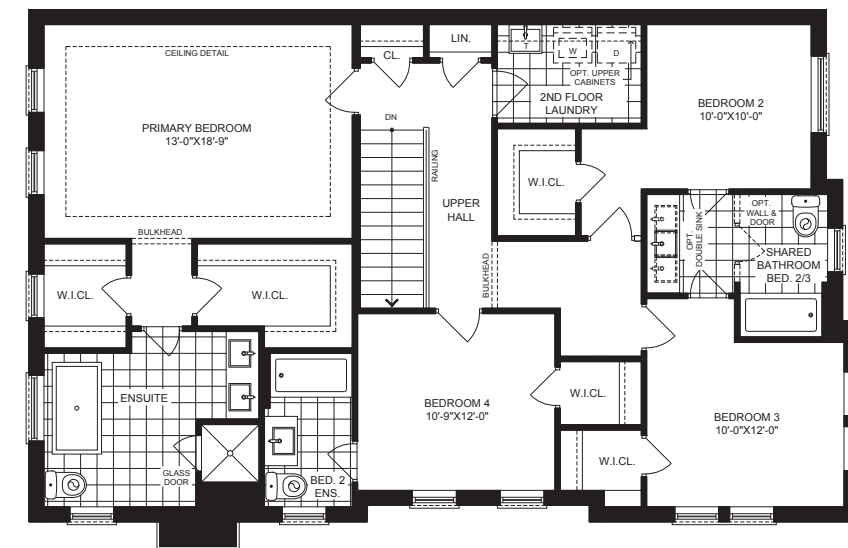
38 ft.

MAYFIELD VILLAGE

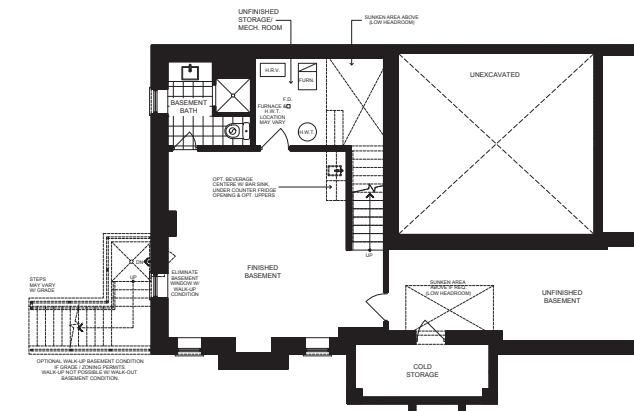
Elevation A | 2,615 SQ.FT.



GROUND A



SECOND A



OPT. FINISHED BASEMENT A



Elevation B | 2,615 sq.ft.



Elevation C | 2,619 sq.ft.

Visit aspensridgehomes.com

Specifications may change without notice. Please see sales representative for other elevation configurations and basement plans. E.&O.E. All illustrations are artist's impressions. © Aspen Ridge Homes. All Rights Reserved. October 2024.

